

District Notes & News



**South Indian River
Water Control District™**

Established 1923

November-December 2015

SUPERVISORS

Stephen Hinkle
President

Michael Ryan
Vice-President

Michael Danchuk

John Meyer

Thomas H. Powell

STAFF

Michael A. Dillon
Manager of Operations

Holly Rigby
Office Administrator

DISTRICT OFFICE

15600 Jupiter Farms Road
Jupiter, FL 33478
(561) 747-0550

www.sirwcd.org
sirwcd@sirwcd.org

Office Hours:

8:00 a.m. - 4:30 p.m.
Monday-Friday

*The Board of Supervisors
meets the third Thursday of
each month at
Jupiter High School
at 7:00 p.m.
Contact the District Office
for an agenda.*

Manager of Operations Annual Report (October 2014-September 2015)



Michael Dillon

Landing. SIRWCD's infrastructure includes 189 miles of roads, 378 miles of roadside swales, and 60 miles of canals.

The District's stormwater discharge system essentially functions as a dual basin system; Palm Beach Country Estates, which is east of the C-18 Canal, and Jupiter Farms which is west of the C-18. With 15 miles of canals, surface waters from Palm Beach Country Estates drain west to east and are controlled by 14-foot elevation weirs prior to entering the Florida Turnpike Borrow Canal system. Waters are then routed northward towards the Southwest Fork of the Loxahatchee River. Jupiter Park of Commerce and Egret Landing share the

The South Indian River Water Control District (SIRWCD) was established in 1923 and encompasses over 12,500 acres, including Jupiter Farms, Palm Beach Country Estates, the Jupiter Park of Commerce, and Egret

same outfall as Palm Beach Country Estates. Surface waters in the Jupiter Farms basin, with 45 miles of primary canals and five flood control structures, flow west to east into the C-14 header canal, then northward to the Northwest Fork of the Loxahatchee River.

Currently, there are twelve employees who execute the day-to-day operations. The District's scope of work for maintenance includes road grading, mowing, and recontouring of drainage swales, outfalls, and canals for stormwater runoff management and retention. Areas of maintenance that are subcontracted include aquatic weed control, water-quality testing, and services to Margaret Berman Memorial Park.

The District's road maintenance program consists of two John Deere Motor Graders, two ten-foot box blades and two International dump trucks. There are over 100 miles of dirt roads that are graded on a weekly basis. Periodically, material is brought in to improve surface conditions due to weather or man-made issues.

continued on pg. 2



Three pavilions, as well as a racquetball court and basketball half-court were completed this summer at the Margaret Berman Memorial Park in Palm Beach Country Estates

Manager of Operations Annual Report

continued from pg. 1

This year, approximately six miles of existing OGEM roads were overlaid and six miles were fog-sealed. OGEM roads are reviewed each year to determine the maintenance needed and is typically scheduled in the late fall or early winter to minimize weather-related issues.

The District's mowing operation consists of three ten-foot batwing mowers, two 23-foot sidearm boom mowers, and one 20-foot sidearm boom mower. Completion of the mowing schedule takes an average of six to eight weeks, with the busiest months being July through October. The District does have a "Do Not Mow" list for residents who prefer to mow their own easements.

The District's drainage and water control program consists of two John Deere combination backhoes, one Kobelco trackhoe with an optional mowing attachment, and one John Deere 544 loader. Daily maintenance includes inspections of drainage swales, outfalls, canals, and the need for aquatic weed spraying. District personnel also inspect driveway culverts, but maintenance of the culverts is the responsibility of the landowner. Like the District, landowners should periodically inspect their culvert for sediment buildup and erosion. When a driveway culvert needs to be replaced, the District will assist the landowner by removing the old culvert, and establishing the proper swale elevation. The landowner is responsible for the purchase and installation of the new culvert.

In conjunction with the inspection of the swales and canals, operators are also trained to identify any illicit discharge within the drainage system. All violations are reported to the proper authorities and if known, those responsible are cited.



Dirt roads in Jupiter Farms and Palm Beach Country Estates are graded on a weekly basis

These inspections are part of our annual reporting for the National Pollutant Discharge Elimination System of Palm Beach County.

Landscape and construction debris that is dumped on District easements is considered illegal dumping and violators will pay twice the amount it would cost the District to have it removed. Debris also has the potential to create drainage issues and possible flooding during heavy rain events. *If you suspect that anyone is committing acts of illicit discharge or illegal dumping, contact our office immediately.*

This year, the District completed numerous projects that will enhance the efficiency of our maintenance program. Culvert crossings were installed along Canal 7 at Alexander Run, Canal 12 at Randolph Siding, and at the intersection of Canal 8 and Canal 11. These crossings will help minimize travel time, fuel usage, and wear and tear on the equipment. They are also an asset to Palm Beach County Wild Land Taskforce who patrols our canal right-of-ways for unauthorized and illegal motorized vehicles. Currently, we are doing restoration work along these canals and the new access points have been a benefit to this project. Another canal project that was completed this year was the restoration of Canal 18 along Jupiter Farms Road between 175th and 176th. At one time, a portion of this canal easement was inaccessible, creating maintenance issues. The vegetation was removed and the bank restored to achieve total access. The same work was also performed along Canal 6 between 133rd and 136th.

Maintenance is an essential part of any scope of work. It minimizes problems and enhances productivity. However, before that can be achieved, operators must first be trained to work responsibly and safely. This year we accomplished this by conducting quarterly meetings with employees

to discuss safety issues and how to collectively implement best management practices while performing our jobs. Also, throughout the year, several District employees attended various workshops related to safety and others received certificates for training as qualified stormwater inspectors. As a result of our efforts, SIRWCD received two awards for employee and driver safety through the Safety Council of Palm Beach County. This was the

19th consecutive year that the District has received awards in these categories. In addition, the District was awarded a reimbursement check for \$1422.41 from its insurer, Preferred Governmental Insurance Trust, for training and safety initiatives.

The District also interacts with agencies and municipalities who provide services and information to those who live and work within our boundaries. They include Palm Beach County, South Florida Water Management District, Solid Waste Authority, Palm Beach County Sheriff's Office, and Palm Beach County Fire-Rescue. The District also participates as committee members of The Florida Association of Special Districts, The Loxahatchee River Coordinating Council, The Loxahatchee River Preservation Initiative, The Safety Council of Palm Beach County, and North County Land Managers Association.

The District is also involved with community events. This year, our annual Landowners Day BBQ was a tremendous success with many people attending for the first time. This event gives you, the landowner, a chance to meet the Board of Supervisors, staff, and operators of the District. It's also an opportunity to interact with other local agencies and organizations who serve within the community. At the Jupiter Farms Christmas Parade, Supervisors and staff participated together for a day of fun as we ushered in the Holiday season with our version of Rudolph the Red-Nosed Reindeer. We even won a couple of awards!

The maintenance and improvement of the works of South Indian River Water Control District and our interrelations with landowners, outside agencies, and governments is how the District is structured and this structure is always a work in progress. Looking ahead to next year, we will continue to evaluate our maintenance program and make adjustments to improve the quality of service for the residents of the District. Future projects include outfall drainage systems, canal culvert crossings and road resurfacing.

If you would like to learn more about South Indian River Water Control District, please feel free to visit our web site at www.sirwcd.org or stop by our office at 15600 Jupiter Farms Road. We are open Monday through Friday from 8:00 am to 4:30 pm. In addition, you can call us at 561-747-0550 or send us an email at sirwcd@sirwcd.org with any questions or concerns you may have.

District Engineer's Annual Report (October 2014-September 2015)

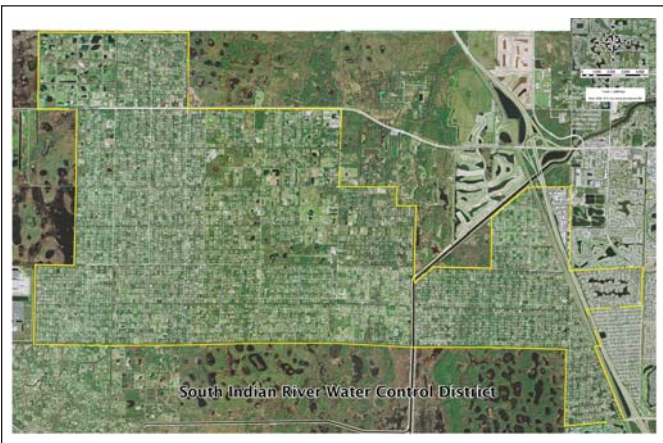


Amy Eason, P.E.

Stormwater management is an ever-evolving function for South Indian River Water Control District (SIRWCD or District).

When SIRWCD was originally formed pursuant to Chapter 298, Florida Statutes in 1923, flood control was the main purpose of the District. As a result, the initial works of the District consisted primarily of drainage canals, mainly used for agricultural purposes. Today, the District's main purpose remains flood control, but it is also aware of the regional and area concerns of the community in terms of stormwater quantity and quality. With the development of water quality regulations, the potential impacts from development are being monitored by agencies and/or individuals that have a focused interest on maintaining a healthy ecosystem within the Loxahatchee River Basin and, specifically, the Northwest Fork of the Loxahatchee River. Approximately 12,500 acres of SIRWCD discharge into the Loxahatchee River Basin, and therefore, the District is actively engaged in the many external dealings that are influencing the District from a water supply, flood control, water quality, and ecosystem management perspective. The Board of Supervisors and staff are focused on making sure that the goals and expectations of these external activities do not conflict with the District's best interests with regard to the functioning of SIRWCD's system and the ability to deliver an appropriate level of service.

From an operation and maintenance standpoint, the District continues to work with the landowners at improving conditions affecting stormwater management.



South Indian River Water Control District encompasses over 12,500 acres and is responsible for maintenance of canals, swales and roadways

District staff continues to assist the Board of Supervisors with operation and maintenance activities involving site-specific drainage improvements that impact landowners, canal and culvert maintenance, and replacement or renewal of facilities that affect the works of the District. In addition, the District operates and maintains roadways and a park and continues its role to serve the landowners with operation and maintenance of its infrastructure and implementing capital improvement projects and landowner-initiated improvements to the District.

Annually, the District examines the need to implement capital improvement projects that could enhance the works of the District. Capital improvements may occur on existing infrastructure such as roads, canals, and drainage structures. Roadway improvements are usually initiated where the traffic volumes for a specific roadway necessitate the improvements or the improvements are undertaken as a result of landowner initiatives. Landowner-initiated roadway petitions for the application of Palm Beach County Standard Asphalt or Open-Graded Emulsified Mix (OGEM) are received and analyzed by staff on a regular basis.

Each year, it is appropriately restated and recognized in the engineering report that the SIRWCD Board of Supervisors, through its policies and procedures, is responsible for formulating direction regarding District operations and inter-governmental issues. This is accomplished through a respected structure in which the District is managed through its Board of Supervisors and supporting staff. The Board of Supervisors establishes policy and provides direction to staff concerning budget, priorities, relationship with other

public entities, and landowner issues. Staff is responsible for implementing Board policy, and accordingly, staff responds pursuant to the Board's direction. Engineering tasks continue to be formulated to respond to the Board of Supervisors by implementing their policies and directives, as well as supporting the Manager of Operations in resolving various landowner issues. The relationship between the Board of Supervisors and District

staff has been extremely effective in both the delivery of services to the residents and landowners within the District, and prospective management in response to requirements that are imposed upon the District by other governmental entities.

With regard to the current status of the District, to the best of my knowledge and belief, the District is in compliance with all regulatory requirements that affect works of the District and their operation, and the works of the District continue to be operated and maintained in a manner that achieves the available level of service.

CAPITAL IMPROVEMENTS Proposed Eighteenth Plan of Improvements

Based on a landowner initiative, a referendum was prepared by SIRWCD and verified by the Palm Beach County Supervisor of Elections to implement the application of asphalt on the petitioners' roadway surfaces as a roadway improvement project. On May 14, 2015, the Board of Supervisors authorized staff to develop the *Eighteenth (18th) Plan of Improvements*. A public hearing was held August 20, 2015 where the plan was approved and the Board authorized the Engineer's Report for the *18th Plan of Improvements*. This plan includes the Unit of Development RI-18, which consists of the application of Palm Beach County Standard asphalt on approximately 3.8 miles within Palm Beach Country Estates:

- 64th Way N between 146th Road N and 149th Place N
- 67th Trail N between 146th Road N and 149th Place N
- 68th Drive N between 146th Road N and 149th Place N
- 74th Avenue N between 155th Place N and 159th Court N
- 75th Way N between 150th Court N and 154th Court N
- 77th Trail N between 150th Court N and 154th Court N
- 78th Drive N between 155th Place N and 159th Court N
- 81st Terrace N between 150th Court and 154th Court N
- 149th Place between 69th Drive N and 64th Way N
- 163rd Court N between 75th Avenue N and 79th Terrace N
- 163rd Ct N between 75th Avenue N to East End

continued on pg. 4

continued from pg. 3

A public hearing for the Engineer's Report is planned for October 15, 2015. After approval of the Engineer's Report, construction documents for Unit of Development RI-18 will be prepared. Construction is anticipated in 2016. (Please see page 9 for an update on this project.)

Proposed Plan of Improvement

The District has received petitions from landowners to apply asphalt on certain roadways within the District. Landowners on the following roadways are petitioning to distribute a referendum for applying OGEM in Jupiter Farms (approximately 0.4 miles) and applying asphalt in both Palm Beach Country Estates and Jupiter Farms (approximately 2.7 miles):

OGEM

- 93rd Lane N between 155th Road N and 159th Court N

ASPHALT

- 75th Avenue N between 150th Court N and 155th Place N
- 76th Trail N between 163rd Court N and 165th Street N
- 78th Drive N between 165th Street N and 167th Court N
- 85th Way N between 155th Place N and 159th Court N
- 93rd Lane N between 155th Road N and Sandy Run N
- 159th Court N between 79th Terrace N and 84th Avenue N
- 175th Road N between Jupiter Farms Road and West End
- 179th Court N between Mellen Lane N and Alexander Run

The District continues to accept petitions for this next plan of improvements. The next step will be to issue a referendum to the affected landowners. See updated information on this project on page 10.

Resource Regulation

National Pollutant Discharge Elimination System (NPDES)

The current Palm Beach County Municipal NPDES Permit was issued by the Florida Department of Environmental Protection (FDEP) on March 2, 2011. SIRWCD is a co-permittee along with 34 municipalities, the Department of Transportation, Palm Beach County, and four special districts. In order to complete the permit-related activities that are performed collectively by the co-permittees,

an NPDES Steering Committee was formed. The Steering Committee meets on a regular basis to evaluate the program, to provide training and resources to the co-permittees, and to assist with the preparation of the annual reports. Staff continues to attend the Committee Meetings as a Steering Committee Board member. This past year the meetings included a discussion of Waters of the United States rule, public education, Year 4 water quality monitoring and pollutant loading results, the Annual Reports and Joint Report. Training was also provided through the Florida Stormwater Association Stormwater Operator Training, Stormwater, Erosion & Sedimentation Control Inspector Training program, and a training video session was conducted to satisfy permit requirements. In addition, public outreach videos have been acquired to help educate the public on stormwater activities.



Waters of the United States Rule

On April 21, 2014, the EPA and the Army Corps of Engineers proposed draft rules revising the definitions of Water of the United States or "WOTUS". The stated intent of the changes is to clarify what is and what is not a WOTUS. After many agency comments on the proposed rule, the rule was revised and the EPA and the Army Corps of Engineers published final rules revising the definitions of WOTUS that became effective on August 28, 2015. However, if implemented as adopted, the new regulations will result in significant impacts on the NPDES program and municipal separate storm sewer system (MS4) permit holders because most ditches, stormwater conveyances, and certain flood control devices will be considered to be "WOTUS" and subject to permit conditions and numeric nutrient criteria.

On August 27, 2015, a federal judge in North Dakota granted a petition filed by 13 western states to enjoin implementation of the rules – making implementation and application of the rules throughout the rest of the country even less certain. In addition, other states including Florida have filed lawsuits challenging the rule.

Staff will continue to monitor the proposed rule and provide updates to the District.

Public Facilities Report/Water Control Plan

Chapter 189 of the Florida Statutes, the Uniform Special District Accountability Act, requires the preparation and submission of a Public Facilities Report to governmental jurisdictions in which the District resides such as Palm Beach County, the Town of Jupiter, and South Florida Water Management District. Special Districts are required to submit an update to this report every five years and, at a minimum, the report must contain information as to the status of the District's public facilities and changes or revisions to those facilities that have occurred in the past year.

Since 1991, when the District filed its first Public Facilities Report, data collection has been an on-going process to provide for better and more accurate mapping of the works of the District. The Public Facilities Report is continually modified as each Plan of Improvement is added to the District's facilities. The current modification includes the 18th Plan of Improvements and proposed capital improvements for next year. South Florida Water Management District is currently reviewing the amendment. In accordance with Chapter 298.225 Florida Statutes, the Water Control Plan is amended consistent with the preparation of the proposed Plan of Improvement during the last year.

Intergovernmental Coordination

Loxahatchee River Management Coordinating Council

SIRWCD continues to participate as an active member of the Loxahatchee River Management Coordinating Council. This Council was established by Chapter 83-358, F.S. The Council is comprised of federal, state, and regional agencies and local representatives. It advises the FDEP and SFWMD on matters that affect administration of the Loxahatchee River, to identify and resolve inter-governmental coordination problems and to enhance communications. SIRWCD participates as a member of the Coordinating Council due to the fact that the Northwest Fork of the Loxahatchee River is the primary stormwater outfall for the entire portion of SIRWCD lying west of the SFWMD C-18 Canal, and the area east of the SFWMD C-18 discharges into the middle of the Loxahatchee River. SIRWCD and the Council also have several mutual issues and interests.

continued on pg. 5

■ **Loxahatchee River Preservation Initiative**

The Loxahatchee River Preservation Initiative (LRPI) is the outgrowth of a watershed management effort that the FDEP spearheaded in 1996. This multi-agency and stakeholder based advisory group was organized primarily for the purpose of soliciting, ranking and submitting to the Florida Legislature a list of projects focused on the preservation and restoration of the water quality and habitats of the Loxahatchee River and its watershed. Agencies and stakeholders are given an avenue to apply for funding on several key projects that are critical to preserving the long-term health of the Loxahatchee and have not been implemented due to lack of resources and other regional priorities taking precedence.

SIRWCD participates as a member of the LRPI due to its location within the Loxahatchee River watershed. Last year, SIRWCD applied for grant funding for a project on 128th Trail North located north of Indiantown Road. The project received ranking to receive funding, but the Florida Legislature did not provide any funding for any of the ranked projects. SIRWCD will continue to apply for grants in the future.

■ **South Florida Water Management District (SWFMD) Everglades Restoration Strategies**

SWFMD's "Everglades Restoration Strategies" program has been developed in order to address water quality-based effluent limits for Stormwater Treatment Areas to meet NPDES permitting requirements by EPA. Under these strategies, the SFMWD is implementing a technical plan to complete several projects that will create more than 6,500 acres of new stormwater treatment areas (STAs) and 116,000 acre-feet of additional water storage through construction of flow equalization basins (FEBs). FEBs provide a more steady flow of water to the STAs, helping to maintain desired water levels needed to achieve optimal water quality treatment performance.

As part of the program's Technical Plan, both STA expansions and Flow Equalization Basins (FEB) upstream of STAs are proposed. The plan includes designation of the L-8 Reservoir as a 45,000 ac-ft FEB that will have a multi-purpose function to capture, store and deliver water to STA-1 East, STA-1 West, and the Loxahatchee River and for other restoration purposes. When the STA-1 West expansion is completed and in-basin

storage for the Loxahatchee River comes online, the L-8 FEB will transition to primarily delivering consistent flows needed to optimize performance of STA-1 East and STA-1 West as part of the plan. The L-8 Flow Equalization Basin is expected to complete construction in December 2016.

To date, SFWMD has not made available the modeling assumptions or results in support of the Plan. AECOM will be participating in a Technical Advisory Committee as the Plan moves forward.

■ **Loxahatchee River Watershed Restoration Program**

In December 2014, SFWMD and the Army Corp of Engineers (ACOE) kicked off the Loxahatchee River Watershed Restoration Project (formerly known as North Palm Beach County – Part 1), which is part of the Comprehensive Everglades Restoration Plan (CERP). The project aims to restore and sustain the overall quantity, quality, timing, and distribution of freshwaters to the federally-designated "National Wild and Scenic" Northwest Fork of the Loxahatchee River for current and future generations. This project seeks to restore, sustain, and reconnect the area's wetlands and watersheds that form the historic headwaters for the river and its tributaries.

■ **Florida Association of Special Districts (FASD)**

SIRWCD's Board of Supervisors and staff are active participants in the Florida Association of Special Districts (FASD). FASD is the recognized, collective voice of special purpose government in the state. This network of Independent and Dependent Special Districts work together to provide resources developed to meet their specialized needs. FASD informs the public of the benefits of Special Districts, updates members with information that affects them and their communities, reviews government activities as they affect the interests of Special Districts, and forwards requests and comments to the Florida Legislature. FASD provides primary education and training to satisfy requirements of Chapter 189, Florida Statutes and ensure that elected boards and district managers comply with Florida Statutes governing special districts. The Department of Economic Opportunity, Division of Community Development, assists with educational programs for board members and the annual conference by partnering with the Association.

The FASD holds meetings throughout the year where information from water control districts, improvement districts, community development districts, and



The CERP project is intended to restore and sustain the overall quantity, quality, timing and distribution of freshwaters to the federally-designated "National Wild and Scenic" Northwest Fork of the Loxahatchee River

Planning efforts for the project were put on hold in 2011 and have now been restarted. Currently, the project is being re-scoped under USACE's New Planning Paradigm and existing plan formulation data and analysis will be used in the development of a final plan, known as a Project Implementation Report and Environmental Impact Statement, to prepare for congressional authorization.

special taxing districts can be shared with regard to policies, procedures, operation, and maintenance issues. Members of the Association are "watchdogs" for codes, ordinances, rules, and/or legislation that can either help or hinder the activities of Special Districts and to this end, a significant effort is put forward during the annual legislative session.

continued from pg. 5

The FASD will continue to represent the interests of its members and provide information on pertinent legal requirements, sunshine laws, economic challenges, environmental, emergency management, and homeland security issues.

Operations and Maintenance

■ Canal 18 Bank Expansion and Stabilization

Due to the need for additional area for access to Canal 2, Canal 18 was expanded from 176th to Canal 2. Canal 18 is located along the west side of Jupiter Farms Road from the Jupiter Farms Shopping Center to Canal 2. Approximately 990 feet of the west bank of Canal 18 was widened to provide at least 10 feet for access for maintenance activities on Canal 2. Rock rip rap was also installed for erosion control of the newly constructed bank. The project was completed May 21, 2015 at a cost of \$95,777.

■ Culvert Installation in Canal 7 at Alexander Run

The District has been investigating options for the potential of reducing its operation and maintenance costs. One way those costs could be reduced would be to add additional access points to the perimeter canal. Several culverts were planned and in March 2015, a culvert was installed in Canal 7 at Alexander Run. The project included the installation of approximately 60 feet of 48-inch diameter pipe, fill material, rip rap, sod, and a steel gate. The construction cost was \$39,000.

■ Culvert Installation in Canal 8 at Canal 11

In addition to the Canal 7 at Alexander Run culvert, a culvert was installed in Canal 8 at Canal 11 in March 2015 to provide access for operation and maintenance to the perimeter canal. The project included the installation of approximately 60 feet of 48-inch diameter pipe, fill material, rip rap, sod, and a steel gate. The construction cost was \$24,650.

■ Culvert Installation in Canal 12 at West End of Randolph Siding Road

In March 2015, a culvert was also installed in Canal 12 at the west end of Randolph Siding Road to provide access for operation and maintenance to the perimeter canal. The project included the

installation of approximately 60 feet of 78-inch diameter pipe, fill material, rip rap, sod, and a steel gate. The construction cost was \$41,930.

■ Canal Clearing & Maintenance

The District's canal network consists of over 60 miles of canals which are continuously in need of being maintained, restored, and enhanced. The canal clearing and maintenance program's objective is to keep the canal sections easily accessible and, to the best extent possible, free from trees and other vegetation that may potentially enter the canal during a major storm event and thereby create a restriction that would aggravate flooding.

The canal clearing and maintenance program provides services that include clearing, grading and shaping of the canals as well as restoring, replacing or enhancing structural improvements. The program is an ongoing effort and the District has continued to work to maintain and achieve the desired goals.

The Board has authorized an on-going swale maintenance program which allows the District Engineer and Manager of Operations to identify areas within the District that could be improved for conveyance and storage. District staff will continue to work toward the desired goals of the District in the swale maintenance program.

■ Margaret Berman Memorial Park

In 2011, SIRWCD was given operation and maintenance responsibilities for the proposed Margaret Berman Memorial Park. The District had performed initial activities for the park, which included a stormwater management system, asphalt exercise path, asphalt parking area, fire hydrant relocation, landscaping, and irrigation, all of which were completed on July 26, 2012.

This year, the District completed the original plan for the community park with the installation of three pavilions, a half basketball court, and a racquetball court. Construction was completed on August 31, 2015 at a total cost of \$273,355.00. The District continues to operate and maintain this facility.



Culvert installation at Canal 7 and Alexander Run

■ Reese's Bridge

South Florida Water Management District (SFWMD) approached SIRWCD about taking over operation and maintenance of the bridge (Reese's Bridge) that crosses the C-18 Canal. This bridge provides access for SIRWCD to transport maintenance equipment to operate and maintain SIRWCD facilities within Palm Beach Country Estates. Improvements and restoration are needed to extend the life span and safety of the bridge and a SFWMD permit transfer will be required.

■ Policies & Procedures Manual

In accordance with the provisions of the Florida Statutes, the District maintains a Policies and Procedures Manual that is available to the public. The Manual presents and discusses items including: District organization, agenda formulation and execution, processing of permits that affect works of the District, the budget process, and so forth. Periodic revisions with deletions, additions, and amendments to maintain consistency with Florida Statutes and other codes and rules enable the District to function properly.

■ Roadways

There are approximately 189 miles of roads within SIRWCD. These roads give access to each subdivided parcel of land. Currently there are 89.9 miles of improved roads (paved and OGEM) and 98.1 miles of unpaved roads in SIRWCD. The improved roads include roads that are operated and maintained by Palm Beach County, the Town of Jupiter, and private, which consist of approximately 42 miles of roadway.

continued on pg. 7

Aquatic Weed Control Program

SIRWCD implements an Aquatic Weed Control Program in order to maintain the primary canals throughout the District. This Program is an ongoing process aimed at reducing and managing the amount of weeds in the canal network to allow unobstructed drainage following rain events. The Aquatic Weed Control Program is necessary to prevent canals from becoming overgrown and to provide a clean channel through the canal system to the outfall.

The program controls emergent vegetation growth through the use of herbicides approved in permits obtained from the State of Florida, as well as mechanical removal of dead or accumulated vegetation that may present a potential for impeding the flow of storm water through the primary canal system.

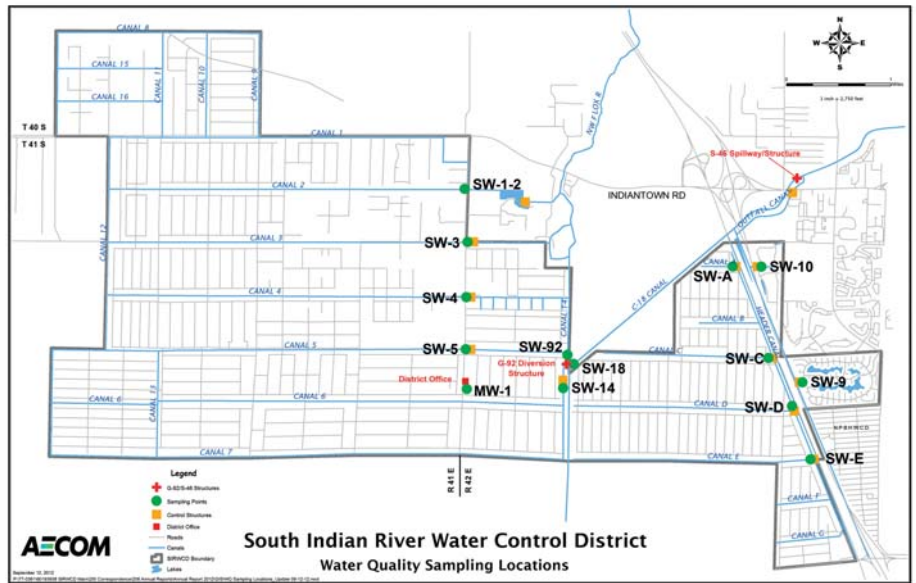
In the future, greater emphasis may be needed for this program as a result of NPDES water quality programs, the FDEP and EPA proposed storm water criteria, the Ecosystem Management Area Plan, and other intergovernmental coordinating activities.

Water Quality Monitoring

Due to the many ecological and regulatory pressures being exerted over the Loxahatchee River Basin area, it was recommended that the District sample and monitor water quality within and adjacent to its boundaries. SIRWCD had historically

taken samples through a co-operative agreement with the United States Geological Survey (USGS), but due to reduced funding by the federal government, the program was abandoned. The Loxahatchee River District (LRD) has been obtaining water quality samples in recent years. The existing sampling locations done by LRD are depicted below. Due to the new water quality legislation being proposed, the Board of Supervisors had instructed staff to implement a water quality monitoring program that augments and expands the current LRD program.

In July 2011, SIRWCD entered into a contract with a water sampling and testing firm. The samples are tested to analyze the surface water and groundwater for various metal, organic and inorganic contaminants as well as water quality criteria.



SIRWCD Water Quality Sampling Locations

The Lateral Control Structures constructed as part of the 9th Plan of Improvements have provided the District with a significant amount of water level monitoring data that is very valuable to the District to better manage the system for flood protection and environmental benefits.

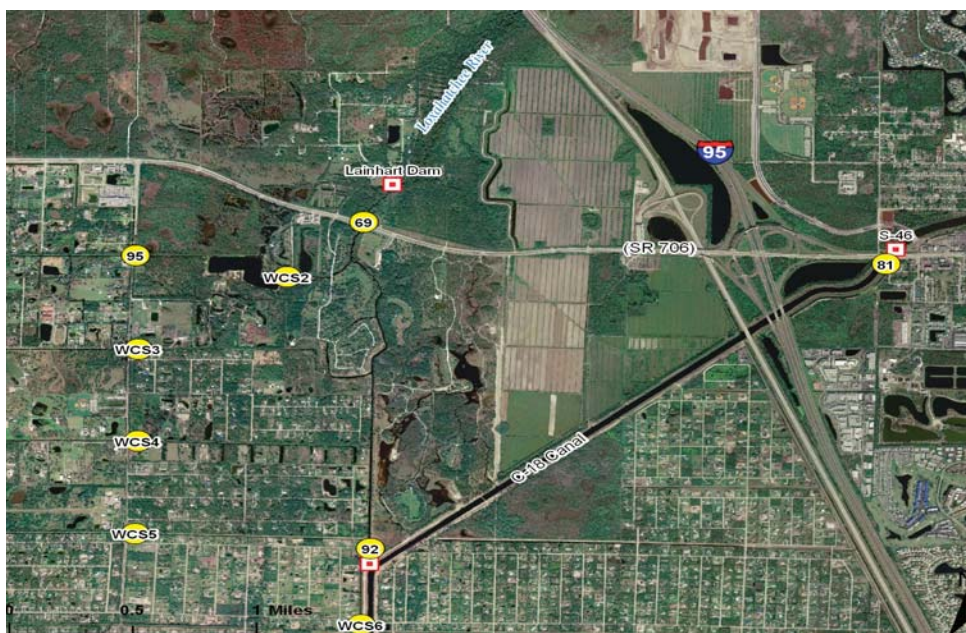
Rainfall Totals

The SIRWCD work center monitors and records the total rainfall the District receives throughout the year. For the twelve month period from September 2014 through August 2015, the District received 57.38 inches of rainfall. The average annual rainfall for SIRWCD is 65.11 inches. The 2014-2015 year rainfall was lower than the historical rainfall average within the District.

The 2014-2015 monthly rainfall data from SIRWCD, Loxahatchee River District, and Town of Jupiter have been averaged to determine the rainfall for an area referred to as North County. The average total year rainfall in North County from September 2014 to August 2015 was 56.53 inches.

General Operation and Maintenance

The District's Manager of Operations Annual Report is included in this newsletter. It offers a summary of significant events and issues that have been identified by the Manager of Operations, who along with District staff, are the agents for day to day activities. They are primarily focused on maintaining the primary and secondary elements of the surface water management



LRD Water quality monitoring stations



*The District plays an integral part in the management of the natural ecosystem in northern Palm Beach County
Photo courtesy of Dan Marchetto, Palm Beach Country Estates*

rural residential community with some commercial, industrial, and urban residential areas. Accordingly, certain low-lying areas within the District will experience ponding and storage of water during the wet season and following significant storms. Swales will have standing water, and many areas will be saturated for extended periods of time during the wet season. The continued development of low-lying areas in the District will result in a commensurate consumption of storage within the District's watershed.

Where ponds are excavated on individual lots to supply the fill for house pads and related improve-

ments, the consumption of available storage is not as severe because the pond serves as a compensating factor. These factors are regularly discussed by the Board of Supervisors and District staff at the monthly meetings, with individual landowners, in forums and meetings within the District, and within the District's newsletter and other publications distributed throughout the District. The District's Board of Supervisors and staff work to assure that the surface water management system functions to the extent of its permitted capacity while recognizing the regulatory requirements imposed on the District by other agencies. All of the District work must be implemented within the adopted budget and utilization of existing manpower, equipment and any other resources available to accomplish the tasks.

General Comments

SIRWCD has an obligation to its landowners and to the surrounding area due to its strategic location within naturally sensitive conservation areas. SIRWCD is no longer an entity that can just look within its boundaries with regard to its authorized activities. To the contrary, a major portion of SIRWCD's activities require participation in activities that look at infrastructure needs and ecosystem management for the overall area and region. The District and its landowners will have to share in the continued responsibility of being good stewards in maintaining compatibility with these natural systems.

The goals and objectives of SIRWCD are consistent with those for the Loxahatchee River Water Restoration Project, the Loxahatchee Basin Ecosystem Management Area, and the Comprehensive Everglades Restoration Plan. The District will continue to work with South Florida Water Management District and other agencies in developing and implementing compatible plans for the District and the Loxahatchee River Basin to serve its landowners and its surrounding community.

SIRWCD will continue to serve its landowners by providing support during emergency situations, maintaining and operating the surface water management system at optimal levels, and providing services that coincide with system capabilities, board policies, and the community.

AECOM has appreciated the opportunity to continue serving as the South Indian River Water Control District Engineer, and we look forward to working with the Board of Supervisors, landowners, and staff in the coming year.

continued from pg. 7

system and the graded roadways throughout the District. Further, the Operations Manager facilitates interagency coordination with other public entities that operate and maintain assets within the District such as Palm Beach County Road and Bridge Division, Palm Beach County Parks and Recreation, Palm Beach County Fire Control, Palm Beach County School Board, Florida Department of Transportation, South Florida Water Management District, Town of Jupiter, the Loxahatchee River District, and others.

Each year, a portion of this report is utilized to state that the District's surface water management system is designed, operated, and maintained for a mostly

SIRWCD AND REGULATORY AGENCIES

Each year, a summary of regulatory agencies affecting SIRWCD is listed in the Annual Report to help landowners be aware of the number of regulatory agencies and cooperative associations the District deals with and their potential impact on District capital improvements, operations, and maintenance:

- United States Environmental Protection Agency
- United States Fish and Wildlife Services
- Florida Department of Transportation
- Florida Fish and Wildlife Conservation Commission
- Loxahatchee River Ecosystem Management Area Committee
- Loxahatchee River Environmental Control District
- Northern Palm Beach County Improvement District
- Solid Waste Authority of Palm Beach County (SWA)
- United States Army Corps of Engineers
- Florida Department of Environmental Protection
- South Florida Water Management District
- Loxahatchee River Management Coordinating Council
- Florida Department of Economic Opportunity
- City of Palm Beach Gardens
- Indian Trail Improvement District
- Numerous Citizen Interest Groups & Committees
- Jupiter Inlet District
- U.S. Geological Survey
- Palm Beach County
- Town of Jupiter
- Martin County
- City of West Palm Beach

Board Of Supervisors Approves Engineer's Report for 18th Plan of Improvements

On March 26, 2015, District staff had received the official certification from the Supervisor of Elections on the results of the referenda for the 2015 Landowner-Initiated Roadway Improvement Project. The majority of the landowners who voted on the following roadways were "in favor" of the proposed project for the application of asphalt to these roadways in Palm Beach Country Estates (approximately 3.8 miles):

- 64th Way N between 146th Road N and 149th Place N
- 67th Trail N between 146th Road N and 149th Place N
- 68th Drive N between 146th Road N and 149th Place N
- 74th Avenue N between 155th Place N and 159th Court N
- 75th Way N between 150th Court N and 154th Court N
- 77th Trail N between 150th Court N and 154th Court N
- 78th Drive N between 155th Place N and 159th Court N
- 81st Terrace N between 150th Court N and 154th Court N
- 149th Place between 69th Drive N and 64th Way N
- 163rd Court N between 75th Avenue N and 79th Terrace N
- 163rd Court N between 75th Avenue N and East End

The first required public hearing for the project was held on August 20, 2015, at which time the Board of Supervisors directed the District Engineer to prepare the Engineer's Report.

At the second required public hearing held on October 15, 2015, District Engineer, Amy Eason reported the estimated cost for the project was \$1.4 million or approximately \$385,000 per mile. The cost to affected landowners is estimated to be \$1200 for 12 years, or an estimated \$8,813 one-time cost for those landowners wishing to prepay.

After the public hearing was closed, the Board of Supervisors unanimously approved and accepted the Engineer's Report at their Board Meeting and authorized the District Engineer to proceed with the *18th Plan of Improvements*.

Please see the District's website at www.sirwcd.org for status updates on this capital improvement project as new information becomes available.

25th Annual Landowners Family Day March 12, 2016

Mark your calendars and plan to join us for South Indian River Water Control District's 25th Annual Landowners Family Day to be held on Saturday, March 12, 2016. There will be live entertainment, as well as free barbecue, drinks and a petting zoo, pony rides and face painting for the kids! Community organizations and state and local agencies will be on hand with free give-a-ways and information. Meet the Board of Supervisors, District staff and your friends and neighbors at a fun day for all! See you there!

Board of Supervisors Election Results and Election of Officers

South Indian River Water Control District is governed by a five-member Board of Supervisors who serve three-year terms. Supervisors are elected by a vote of the landowners based on parcel acreage. At least three Supervisors must be residents of the District. For this election, all candidates were required to be residents of the District, and one Supervisor had to be a resident of Jupiter Farms.

Ballots for this year's two Board of Supervisors positions were mailed out to all landowners on August 17. Voting was closed on September 17. The ballots have been counted and certified by the Palm Beach County Supervisor of Elections and the results were as follows:

- Stephen Hinkle - 2812
- Rick G. Lee - 951
- John A. Meyer - 2719
- Tom Rice, Sr. - 985



Stephen Hinkle

The Board of Supervisors discussed the Supervisor of Elections certified ballots at their October 15, 2015 Board Meeting. The District's Attorney, Terry Lewis, noted an objection had been filed to contest the election with a request to canvass the ballots and the request had been forwarded to the Supervisor of Elections.

Mr. Lewis noted that it was their legal opinion that the election had been legally and fairly conducted and that Mr. Hinkle and Mr. Meyer had been elected by a large majority of District landowners. Any further challenge would be through the District Court.

The Board voted three to one to accept the Supervisor of Elections' certified results and Mr. Hinkle and Mr. Meyer were sworn in by the attorney. Mr. Hinkle was elected as president, Mr. Ryan was elected as vice president, Jane Woodward as secretary, and committee chairs will remain the same.



John Meyer



Board of Supervisors Sets Cut-off Date for New Roadway Improvement Petitions

At the October 15, 2015 Board of Supervisor Meeting, District Engineer Amy Eason reported that the District had received petitions that have met the minimum 35% requirement for obtaining signatures of the landowners within the project area to apply asphalt on certain roadways in Palm Beach Country Estates and Jupiter Farms. The following is a list of roadways that are petitioning to distribute a referendum for asphalt (approximately 3.5 miles):

- 70th Trail N between 155th Place N and 159th Court N
- 75th Avenue N between 150th Court N and 155th Place N
- 76th Trail N between 163rd Court N and 165th Street N
- 78th Drive N between 165th Street N and 167th Court N
- 85th Way N between 155th Place N and 159th Court N
- 93rd Lane N between 155th Road N and 159th Court N
- 126th Terrace N between Indiantown Road and 185th Street N
- 159th Court N between 79th Terrace N and 84th Avenue N
- 175th Road N between Jupiter Farms Road and West End
- 179th Court N between Mellen Lane N and Alexander Run

In addition, landowners on the following roadway petitioned to distribute a referendum for open-graded emulsified mix (OGEM) (approximately 0.4 miles):

- 93rd Lane N between 155th Road N and 159th Court N

Mrs. Eason noted that 93rd Lane N has petitioned for both asphalt and OGEM.

Mrs. Eason also reported that several other petitions were currently in circulation.

The Board of Supervisors discussed setting a cut-off date for receiving new petitions for this potential capital improvement project. Mrs. Eason said the first petition was received on February 5 of this year and that the District has a policy in place of acting on petitions within a year's time. After debating potential dates, the Board unanimously agreed to set the cut-off date as December 31, 2015. The Board directed the Public Information Officer, Donna DeNinno, to publicize the cut-off date on the website and in this issue of the District newsletter.

Board Approves Amendment to Palm Beach Country Estates Potable Water Agreement

At the Annual Budget Meeting on August 20, 2015, District Treasurer Charles Haas discussed the water distribution agreement that South Indian River Water Control District has with the Town of Jupiter to provide potable water to Palm Beach Country Estates (PBCE).

He reviewed the history of the agreement with the Board where the District entered into an Interlocal Agreement with the Town of Jupiter on June 21, 2005, with a negotiated reduced hookup rate for landowners. The town required an advance of 50% of the fees, and bonds were sold to reserve 1,500 connections. SIRWCD agreed to pay an annual revenue to maintain these connections at the reduced hookup rate. While beneficial at the time, the District continues to pay a guaranteed revenue on any unused connections.

Three years ago, the District entered into an extension of the agreement with the Town of Jupiter where they would continue to offer a reduced hook up fee to PBCE residents, as well as offer financing through the town. The agreement was for a period of three years, with the option to renew for another three years. As of June 21, 2015, there were 511.5 unused connections. Mr. Haas recommended negotiating a sliding-scale on the remaining connections, where the number of available connections at the District's reduced rate would go down each year of the remaining three years of the agreement. The Board directed Mr. Haas to negotiate with the Town to amend the agreement per his recommendations.

At the October 15, 2015 Board Meeting, Mr. Haas reported that the Town of Jupiter had agreed to the District's proposal to reduce the number of reservation connections to a schedule that better reflects the anticipated drawdown as remaining landowners hook up to the PBCE Water Distribution System.

This reduction provides savings for all parcels in PBCE as it reduces the annual cost of the Annual Guaranteed Revenue requirement, which is based on the total number of reservations.

The current agreement calls for payment on 511.5 reserved connections at a cost of \$219.36 for each reservation. The proposed amendment decreases the number of reservations to no more than 300 for the 2015-2016 contract year, 160 reservations for the 2016-2017 contract year, and 80 reservations for the 2017-2018 contract year. All other provisions of the agreement remain in place:

- Landowners who wish to hook up to the system will continue to have a reduced connection fee of approximately \$3,911 for a 3/4" meter compared to the Town's current rate of \$5,202. For a 1" meter, the connection fee is approximately \$9,387, which is a substantial savings over the Town's current rate of \$12,516.
- The Town of Jupiter will continue to offer 20-year financing at 5.5% for those who do not wish to pay up front. This translates to an annual assessment of approximately \$350 for a 3/4" meter.
- The District will receive \$1,778 for each new connection – funds that will be used to reduce the principal of the PBCE Water Distribution System debt.

Mr. Haas recommended approval of the amendment to the District's Interlocal Agreement with the Town of Jupiter for water services to Palm Beach Country Estates.

After questions and discussion by the Board of Supervisors, they unanimously approved the amendment prepared by the District's attorney, William Capko.

Board Authorizes Refunding of Palm Beach Country Estates Potable Water Bonds

At the October 15, 2015 Board Meeting, District Treasurer Charles Haas presented a proposal for advanced refunding of the Series 2006 Water Distribution Bonds for Palm Beach Country Estates (PBCE) to the Board of Supervisors for their consideration. These bonds were originally issued to fund the construction of the water distribution system in PBCE.

Mr. Haas reported that on October 5, the District received an offering bond sheet from BankUnited to loan the District the funds necessary to advance refund these bonds. He said these bonds have a 10-year call protection feature, which is common for these types of instruments, so that they cannot be called until August 1, 2027. He added that an advance refunding is a method by which a bond is defeased by depositing the funds needed to pay all debt service (principal and interest) from the date of deposit to the call date into an escrow account. By doing so, the bonds are considered paid and are no longer reflected in the financial statements as a liability of the District.

The offer is for the District to issue a bond in an amount not to exceed \$14,000,000, with interest tax exempt to the bank.

Mr. Haas said the term of the bond is for 16 years (the same maturity as the refunded bonds) with the interest rate fixed at 2.75% per annum through 2027. The interest rate for years 13 to 16 will be set by a formula based upon the 3-year treasury rate. Should the rate be unacceptable to the District at that time, it would have the right to pre-pay the remaining balance with no penalty.

The proposal also includes an original redemption provision

whereby funds collected from the Town of Jupiter, or funds collected from landowners who wish to prepay their assessment, or any other funds received by the District may be used to prepay principal on the note. These funds would be applied against the longest year of outstanding principal. Mr. Haas explained that this provision is similar to the methodology with the Series 2006B bonds.

The proposal calls for the District to establish and maintain a depository relationship with UnitedBank with a target minimum balance of \$500,000.

Mr. Haas noted the refunding offers a gross savings in debt service estimated at \$1,926,000, translating into a savings for individual Palm Beach Country Estates landowners of \$1,250 or approximately \$83 per year and the net present value savings is estimated at \$1,685,000. With the refunding, the amortization schedule will be revised from an increasing amortization (requiring annual assessment increases) to a level amortization. In addition, the negative arbitrage of the escrow account has been reduced \$208,000 from the original estimate of \$390,000.

Funding is scheduled for December 15, 2015.

After a presentation at a Special Meeting on October 26, Mr. Haas recommended the Board accept the proposal, and after questions and discussion, the Board unanimously approved adopting the resolution in substantially final form and authorized Board President Stephen Hinkle to sign it when completed.

Former Supervisor Tom Rice Honored for 25 Years Service

At a Special Meeting held on October 26, Supervisor Tom Powell presented Tom Rice with a crystal engraved award honoring him for 25 years of dedicated service to the District as Supervisor and Vice President. Mr. Powell said "Mr. Rice has served the District well for more than two decades and has always had the best interests of the landowners first and foremost in mind."

Mr. Rice thanked the Board for the award and noted "I have enjoyed serving the landowners of the District and working with the other Board members, District employees and staff for so many years. I would also like to take the opportunity to congratulate John Meyer and Stephen Hinkle on winning the 2015 election."



Tom Powell (right) congratulates former supervisor, Tom Rice who was honored for his 25 years of service to the District



*The Board of Supervisors
and District Staff wish everyone
a Happy Thanksgiving
and best wishes for the Holidays!*



South Indian River Water Control District™

15600 Jupiter Farms Road
Jupiter, FL 33478

PRSR STD
U S POSTAGE
PAID
WEST PALM BCH FL
PERMIT # 611

In this Issue...

**Manager of Operations
and District Engineer
Annual Reports**

**18th Plan of
Improvements**

Election Results

**New Roadway Petition
Cut-Off Date is Dec. 31**

PBCE Bond Refunding

*Visit www.sirwcd.org
for news updates!*

Florida Stormwater Education Protecting Florida's Water



On April 21, 2014, the EPA and the Army Corps of Engineers proposed draft rules revising the definitions of Water of the United States or "WOTUS". Finalized by the U.S. Environmental Protection Agency and U.S. Army Corps of Engineers in June, the Clean Water Rule is intended to protect streams and wetlands from pollution and degradation with a clearer definition of which waters are protected under the Clean Water Act and the definitions of WOTUS became effective on August 28, 2015. However, if implemented as adopted, the new regulations will result in significant impacts on the NPDES program and municipal separate storm sewer system (MS4) permit holders because most ditches, stormwater conveyances, and certain flood control devices will be considered to be WOTUS and subject to permit conditions and numeric nutrient criteria.

On August 27, 2015, a federal judge in North Dakota granted a petition filed by 13 western states to enjoin implementation of the rules. This summer, 18 state governments in six appellate circuits became plaintiffs in a multi-district case. The states – Ohio, Michigan, Tennessee, Oklahoma, Texas, Louisiana, Mississippi, Georgia, West Virginia, Alabama, Florida, Indiana, Kansas, Kentucky, North Carolina, South Carolina, Utah, and Wisconsin – alleged the new rule would give the federal government jurisdiction of every water body within the United States from small tributaries to dry creek beds and more. The states argue that the rule violates the Clean Water Act.

On Oct. 9, following this injunction blocking the enforcement of the rules, a nationwide stay on the rule was issued by the Sixth Circuit of the U.S. Court of Appeals. The majority opinion states that "petitioners have demonstrated a substantial possibility of success on the merits of their claims." "A stay temporarily silences the whirlwind of confusion that springs from uncertainty about the requirements of the new rule and whether they will survive legal testing," said the court's order.

The case is pending further court action as the court decides whether it has jurisdiction over the case.

In response to this decision, EPA and the Department of Army resumed nationwide use of the agencies' prior regulations defining the term "waters of the United States." Those regulations will be implemented as they were prior to August 27, 2015, by applying relevant case law, applicable policy, and the best science and technical data on a case-by-case basis in determining which waters are protected by the Clean Water Act.

ILLICIT DISCHARGE

If landowners witness anyone dumping materials into the District swales or canal system, or Palm Beach County catch basins, please report this to the District Office at 747-0550.



UPDATE TO ROADWAY IMPROVEMENT PETITION CUT-OFF DATE & POLICY CHANGES

This issue of the newsletter includes a story on the Board of Supervisors setting a cut-off date of December 31, 2015 for this year's new roadway improvement petitions. *Please note that this information has changed since this issue went to press.*

At a policy workshop held on November 12, the Board of Supervisors debated changing the minimum requirements for submitting capital improvement petitions, as well as for voting on any resulting referenda for these projects. In addition, the Board heard from a number of landowners on these issues.

At the Board of Supervisors' monthly meeting on November 19, after additional discussion and landowner input, the Board voted three to two to change the minimum requirement for new capital improvement petitions from the current *35% of affected landowners* to *a majority of affected landowners (more than 50%)*. This requirement is to be applied retroactively to those petitions already received by the District this year. As a result, the Board decided to change the cut-off date from **December 31**, as reported in this newsletter, to **February 29, 2016** to allow time for petitioners to secure the additional signatures needed to meet the new minimum.

In addition, the Board voted three to two to change the policy for voting on a referendum for a capital improvement to require that *a majority of affected landowners (more than 50%)* vote yes in order for the referendum to pass. The old policy required a majority of votes cast in favor in Palm Beach Country Estates and a majority of affected landowners in favor in Jupiter Farms.

Both new policies apply to the entire District. For more information, visit the District website at www.sirwcd.org or call the District office at 561-747- 0550.